



Baldwin Diesel for San Luis Obispo?

The San Luis Obispo Railroad Museum has the rare opportunity to acquire a diesel locomotive that was used on the Coast Line in the 1950s. A Baldwin AS616, 1600 hp, 8 cylinder, diesel locomotive is currently on the West Coast.

The Baldwin AS616, former Southern Pacific #5239, would be an excellent addition to the museum collection as it was actually operated on the Coast Line in the 1950s and 60s. It is a fairly rare locomotive, as only 168 of this model were built in 1951-52. Jim MacEntire states that he remembers operating one of these, possibly this one, in the early 60s. This engine is in operating condition, except for the turbocharger, which needs repair.

★ ATTENTION ★

New Meeting Times

Starting with the January 10, 2002, meeting, the Board of Directors will meet at 6:00 p.m. on the second Thursday of each month at Embassy Suites Hotel, 333 Madonna Road, San Luis Obispo. The general meeting will still be at 7:00 p.m., immediately following the board meeting. This change will enable more people to attend both meetings, if they so desire, and save time for the board members. Workdays will still be scheduled for the following Saturdays.

Due to its age, it will be necessary to load the Baldwin on a flat car to transport it to San Luis Obispo. It is estimated that this will cost approximately \$25,000. Is there anybody out there who could donate any or all of the necessary funds? This locomotive is an exceptional example of Southern Pacific motive power from the mid-20th century that the museum is dedicated to preserving.

Ongoing Donations Help Us Gather Steam

Many thanks to John Conner, General Manager of the Embassy Suites Hotel, for the continuing donation of rooms for our monthly meetings.

Thanks to Bill and Wendy Pyper, of The Prynters, for the printing of the newsletters, brochures, stationery, etc. over the past four years.

Thanks to Karl Hovanitz, of Silverado Stages, for the use of his busses for fund raising trips and opening his Bitter Creek Western Railroad for fundraising barbecues. The last barbecue, in September, netted \$1650 for the museum.

The family of Bill Fahey donated a Genesee Electric Lantern Co. Trainman's Lantern, circa 1922. It probably

— continued on page 3

Another Caboose for SLORRM?



In 1984 a Southern Pacific bay window caboose was donated to the Templeton Chamber of Commerce. The Chamber intended to use it for an office and historical museum and had it installed in Templeton Community Park. The County of San Luis Obispo granted the Chamber a fifteen-year use permit with the specific requirement that the caboose be well maintained. Despite good intentions, the project was never completed and the caboose has

become an attractive nuisance, according to the County. Brad LaRose is working with the Templeton Chamber and Pete Jenny in Countys Parks to get the caboose donated to SLORRM. Brad is also working with City of SLO Public Works Department to get a use permit to lay track near the Jennifer Street Bridge so that we can park the caboose there. After some cleaning and repair we hope to use it as a temporary office for the museum.



Mission Statement

The San Luis Obispo Railroad Museum, founded as a non-profit public benefit educational museum, will preserve the railroad history of California and the Central Coast, by collecting, restoring, displaying and operating historic railroad equipment.

SAN LUIS OBISPO RAILROAD MUSEUM/ AVILA VALLEY RAILWAY MUSEUM

BOARD OF DIRECTORS

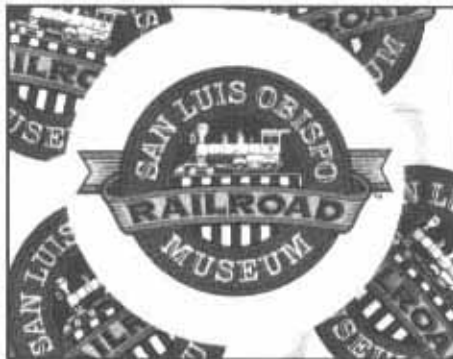
Brad LaRose	President
Karl Hovanitz	Vice President
Arnold Jonas	Secretary
David Rohr	Treasurer
Jim Horton	Aron Kahn
John Marchetti	Duane Powell
		Bill Pyper

Telephone: 805-466-3456
Mailing Address: P. O. Box 13260
San Luis Obispo, CA 93406-3260

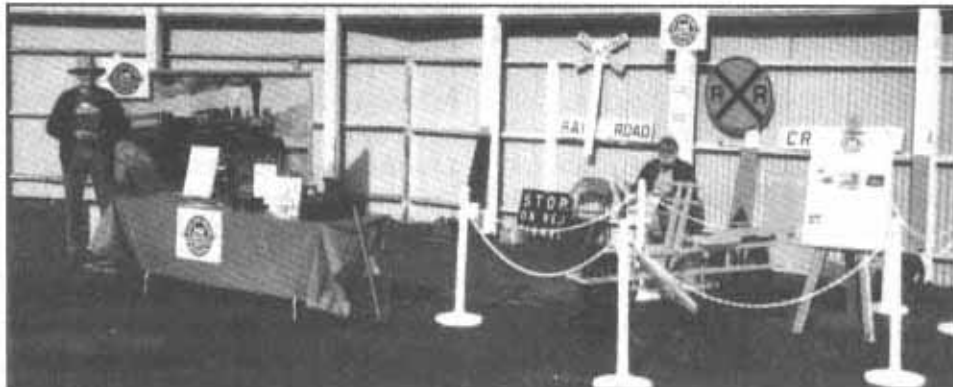


Ken Hampian, City of San Luis Obispo Chief Administrative Officer, speaks at the dedication of the new Transit Center on July 12, 2001. Looking on are County Supervisor Katcho Achadjian and former San Luis Obispo City Councilmember Dave Romero. The 1894 SP Freighthouse (future museum) can be seen in the background.

Badges? We got badges!



Pin-on badges featuring the colorful SLORRM emblem are now available. Printed by Bill Pyper and assembled by Phil Gould, the plan is to sell the buttons for \$2.00 each as a fund raising effort. Anyone wishing to purchase a badge can get one from Bill or Phil. We are looking for locations to sell them.



Arnold Jonas and John Marchetti man the museum display at the San Luis Obispo Rotary Club Car Show at the Sunset Drive-In Theater.

In Memoriam

Luther Boller — passed away August 24, 2001. He was a long time member of the Avila Valley Railway Museum (predecessor organization to the San Luis Obispo Railroad Museum). He gave guidance and inspiration through many difficult decisions. One of which was the purchase of several Pacific Coast Railway boxcars (#20, 1882 Carter Brother, #1200, 1924 Pacific Car and Foundry). He relied on his experience from years as the Fire Chief at the Lockheed Aircraft Corp. in Burbank, CA. He also volunteered over a thousand hours as a motorcar engineer at the Nevada State Railroad Museum. Luther was a dedicated member who will be missed by all.

Michael O'Leary — died September 22, 2001. He had been a member of the museum for several years, providing insight and provoking thought at our museum meetings. He served on the Board of Directors and as museum Vice President.

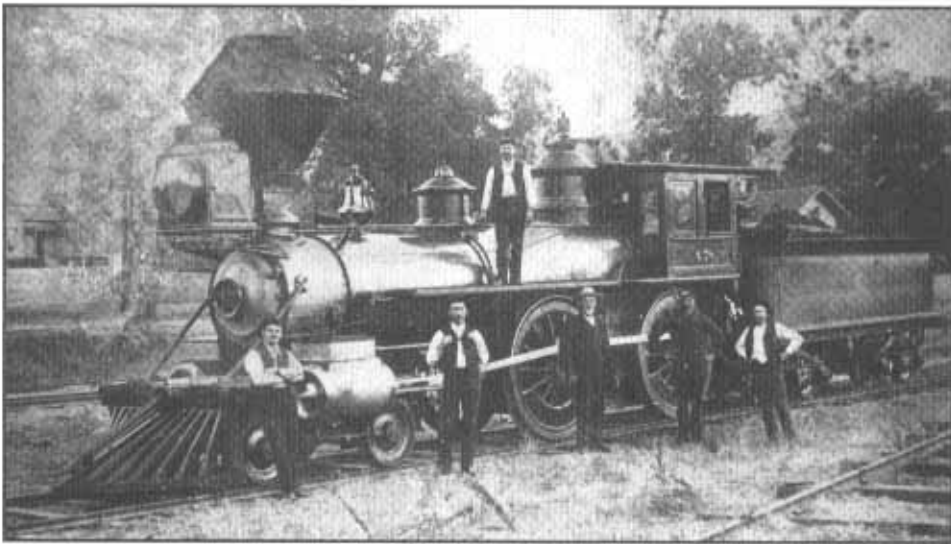
John Jauregui — passed away October 18, 2001. He and his wife Carol were long time members of the museum. He was involved with both the Avila Valley Railway Museum and later the San Luis Obispo Railroad Museum. John and Carol went to many of the fund raising functions that the museum put on over the years and they particularly enjoyed the tours that were frequently conducted. Our sympathy goes out to Carol. John was a kind person and we will miss him.

Pat Holden — passed away October 5, 2001. Although not a member of the museum, he was known to many museum members. He frequently provided good information regarding leads on locating railroad artifacts. He owned Big Foot Hobbies in Pismo Beach, Paso Robles, Atascadero and Nipomo. He was a railfan, model railroader and photographer. He will be missed.

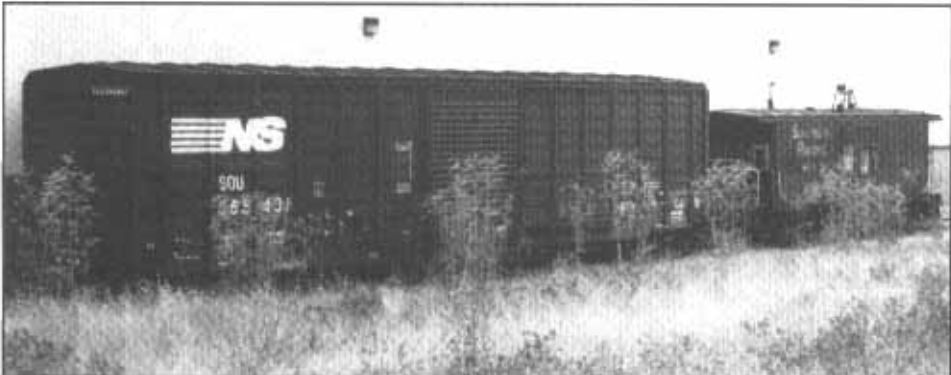
Program Director Needed

In an effort to make the general meetings more appealing to a greater portion of the membership, the Board of Directors has decided that each meeting will feature some form of railroad-oriented entertainment. Such things as railroad videos, slide shows, guest speakers, etc. will be featured.

Someone is needed who will explore ideas for interesting, entertaining, informative programs and coordinate their presentation. A committee would be very useful, so that the work and ideas could be shared. Programs that would be exciting for the general public would also help expand support and interest in the Railroad Museum. Karl Hovanitz has offered a TV/VCR; Bill Pyper has a slide projector and screen. If interested, please contact one of the Board Members as soon as possible.



Dave Spohr of Garden Valley, California, a docent at the California State Railroad Museum in Sacramento, sent us the above print of Southern Pacific locomotive #47, taken at Santa Margarita in 1885. The building just visible behind the tender is the helper engineers' shack on the site of the old roundhouse. Three of the men are identified as: 2nd from left, Charlie Swain; 4th from left, Mr. Goley, sr. foreman; 5th from left, Mr. Sienglod, hostler, SP#47, former CP #231, originally Schenectady #1090, was built June, 1876. Rebuilt in 1891 as SP #1309. It was scrapped at West Oakland, May, 1923.



Museum caboose #1886 is joined by a Norfolk Southern boxcar on the spur behind Wallace Computer Services, on Sacramento Drive in San Luis Obispo.

Donations — *continued from page 1*

came from the Southern Pacific or the North Western Pacific.

Brad LaRose purchased a much needed large compressor from the Sears repair shop and donated it to the museum.

Jared LaRose donated an HO scale model SD45 Locomotive.

Richard Moneghetti, of Los Alamos, donated a whole bunch of tools: track jacks, screw jacks, large wrenches, pry bars, to name a few.

An original copy of the May 1894 edition of the San Luis Obispo Tribune

heralding the closing of the gap and the arrival of the Southern Pacific Railroad from the north was donated by Arlene Zanchuck.

Brent MacGregor donated a U25 control stand which, hopefully, can be used as an interactive display in the museum.

Frank and Sandy Richardson donated a Sears Craftsman heavy duty jigsaw for museum use.

Galaxy Framers, owned by Wilda Rosene, at 3563 Sueldo Street, Suite B, San Luis Obispo, has donated the framing of a Centennial Poster for museum use.

Schedule of Meetings

We meet on the second Thursday of each month at 7:00 pm in the Embassy Suites Hotel on Madonna Road, San Luis Obispo.

Meeting dates for 2002 are:

	January 10
	February 14
	March 14
	April 11
	May 9
	June 13
	July 11
	August 8
	September 12
	October 10
	November 14
	December 12

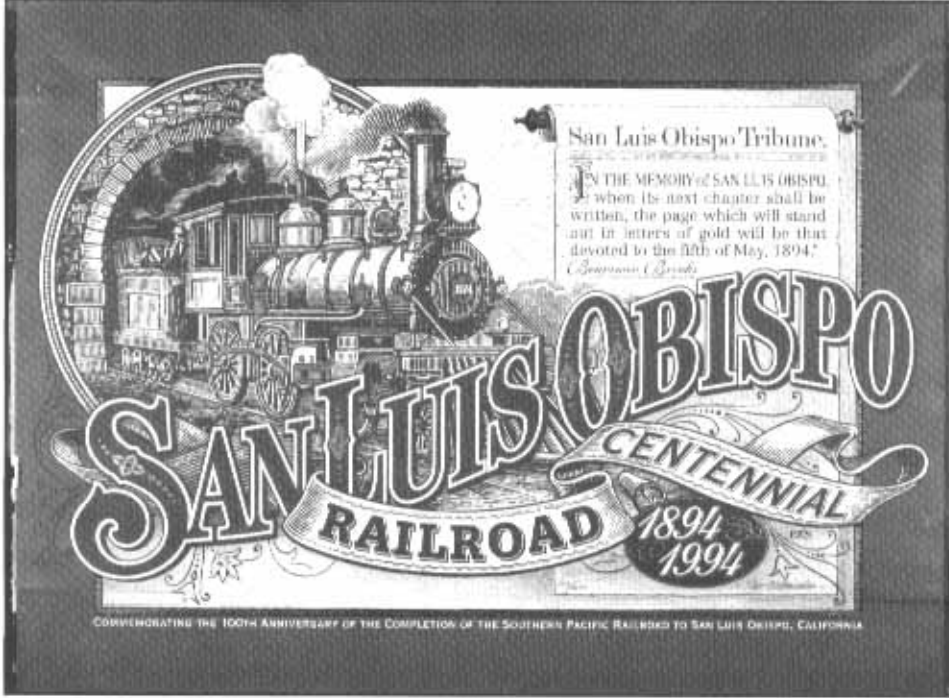
Committee Chairs Named

Utilizing member sign-up sheets indicating interest in committees, the Board of Directors appointed the following people to chair the standing committees. Fundraising, Joe Burns; Physical Master Plan, John Marchetti; Operations and Maintenance, Karl Hovanitz; Member Services, Elsie Louis; Model Railroad Exhibit, John Marchetti; Acquisition and Curation, Brad LaRose; Public Relations, Aron Kahn; Restoration, Duane Powell; Railroad Operations, Arnold Jonas. Anyone interested in serving on any of these committees contact the committee chair.

Club Officers Change

David Rohr has agreed to take on the duties of museum treasurer replacing Larry Tarpley who is stepping down due to increased employment responsibilities. Arnold Jonas has agreed to replace Bill Pyper as Secretary. Bill is also begging off due to time constraints.

At it's October 9, 2001, meeting, the Board of Directors appointed Jim Horton and Aron Kahn to fill two unexpired terms on the Board.



Posters Available

Copies of the Poster created by local graphic designer Pierre Rademacher for the 1994 Centennial Celebration of the 1894 closing of the gap, are still available. This beautiful multi-colored poster measures 18 x 24 inches, and was printed as a limited edition, signed and numbered by the artist. Posters are available for \$25.00 at the San Luis Obispo Chamber of Commerce Visitor Center, 1039 Chorro Street, San Luis Obispo.

The large, 20 x 39 inch, posters of the Historic Railroad District are still available at the City of San Luis Obispo Community Development Department, downstairs in City Hall, at 990 Palm Street.

Rail Road Prynters, 845-B Capitolio Way, San Luis Obispo, has produced a replica of a World War I poster designed to inspire railroad workers. The message is as appropriate today as it was in 1916. These posters measure 12 x 18 inches and can be purchased for \$6.00, plus tax, from The Prynters or Foothill Hobbies at 973 Foothill Boulevard, San Luis Obispo. Of the \$6.00 purchase price, \$3.00 will be donated to the museum.



San Luis Obispo Railroad Museum

MEMBERSHIP APPLICATION FORM

Membership Levels: \$60, Family \$36, Individual

Complete form and mail with your check to: **San Luis Obispo Railroad Museum (SLORRM)**
Post Office Box 13260, San Luis Obispo, CA 93406

PLEASE PRINT CLEARLY

Name(s) _____ Amount enclosed: \$ _____

Address _____

City _____ State _____ Zip _____

Phone (day) _____ (eve.) _____

Fax: _____ E-mail: _____

I will help the museum by volunteering to: _____